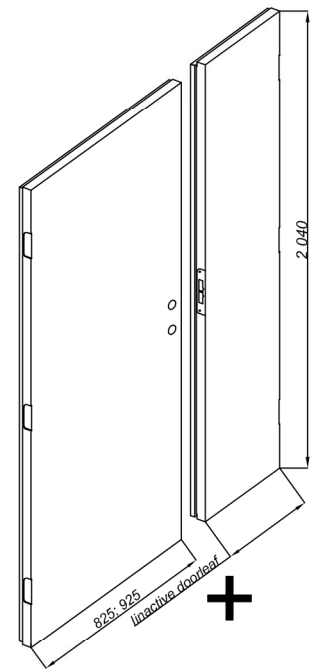
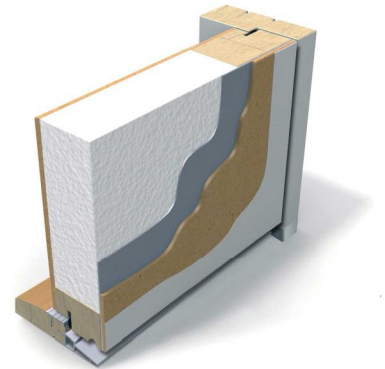




	Standard	Possible extras
Technical data:		
Sound insulation:	Rw 25dB (VTT, TM Rakennusmaailma 2/06)	
Heat insulation:	U=0,77/1,0 W/m ² K (without glass/with glass opening 552 x 750 mm) M10 x 21	
Fire resistance:	-	
Door leaf:		
	Door leaf with thickness 62 mm	
Edges:	Edges painted	Edges stained
Decoration:	Flush	Grooved pattern up to 2,5 mm. Painted doors: decorative boards and/or slits Veneered doors: decorative boards and/or slits
Finish:	White paint (NCS S 0502-Y)	Different colors M161 - brown RAL3011 - brown red RAL7040 - window grey RAL6003 - olive green RAL5023 - distant blue Covered with TEAK cover veneer + (stain)+oil
Gaskets:	brown gasket	
Glass opening:	-	According to model
Glazing bar:	white plastic	brown plastic, stained hardwood
Glass:	24 mm (4-16-4), energy+ornament "raaka"	24 mm, double- or triple- glazing
Frame:		
	Softwood 42 x 105 mm (rebate 12 x 45)	Softwood 42 x 92-130
Profil:	"VK450"	"VK450N" "VK450K" "VK450T"
Finish:	painted white (NCS S 0502-Y)	Different colors M161 - brown RAL3011 - brown red RAL7040 - window grey RAL6003 - olive green RAL5023 - distant blue Stained + oil
Gaskets:	-	
Mounting hole:	Ø 16 mm; white plastic cap	Ø 16 mm; brown or beige plastic cap
Threshold:	Oak 25 x 95 mm (type VK)	
Locking system:		
	Lockcase: Striking plate:	Lockcase: Striking plate:
	565 1887-2	2002 1887-2 2000 fix 1887-2 / fix4950 8765 1887-2 410 1887-2 4190 or LC100 4690 451S 4014 1769/20 E P/SEC S/S
Hinges:		
	3248-110 TMKS (ZN)	3248-110 TMKS JVA, JMEX, PKE, PKU 110x36 KS ZN, (JVA)
Dimensions:		
	Single-leaf M9 x 21 M10 x 21	Special dimensions. Single-leaf M4 - 13 x M17 - 25 With side-piece M11 - 15 x M17 - 25 Double-leaf M15 - 20 x M17 - 25
Ironmongery:		
		Dooreye "Yeti" (MS-, CR-glossy) Kick plate RST (polished, brushed) Mechanical doorbell "Abloy 64" (MS-, CR-glossy) Postbox "T6011000" (Aluminium)
Package:	Door leaf packed with frame. Edges covered with protective board and door coated with plastic.	



Wooden profile

